

AOMEI Backupper Network Beta

Quick Start Guide

Overview

AOMEI Backupper Network Beta is a solution to create and manage backups for your client computers within same LAN from server side.

To back up for multiple client computers via AOMEI Backupper Network Beta, you need to:

- Install AOMEI Backupper Network Beta on server side and AOMEI Backupper Standard Beta on clients.
- Add client computers to AOMEI Backupper Network Beta console. On the server side, you need to obtain control permissions from client computers in order to create and manage backups for these client computers.
- Then, you can create and manage backup tasks for these controlled client computers.

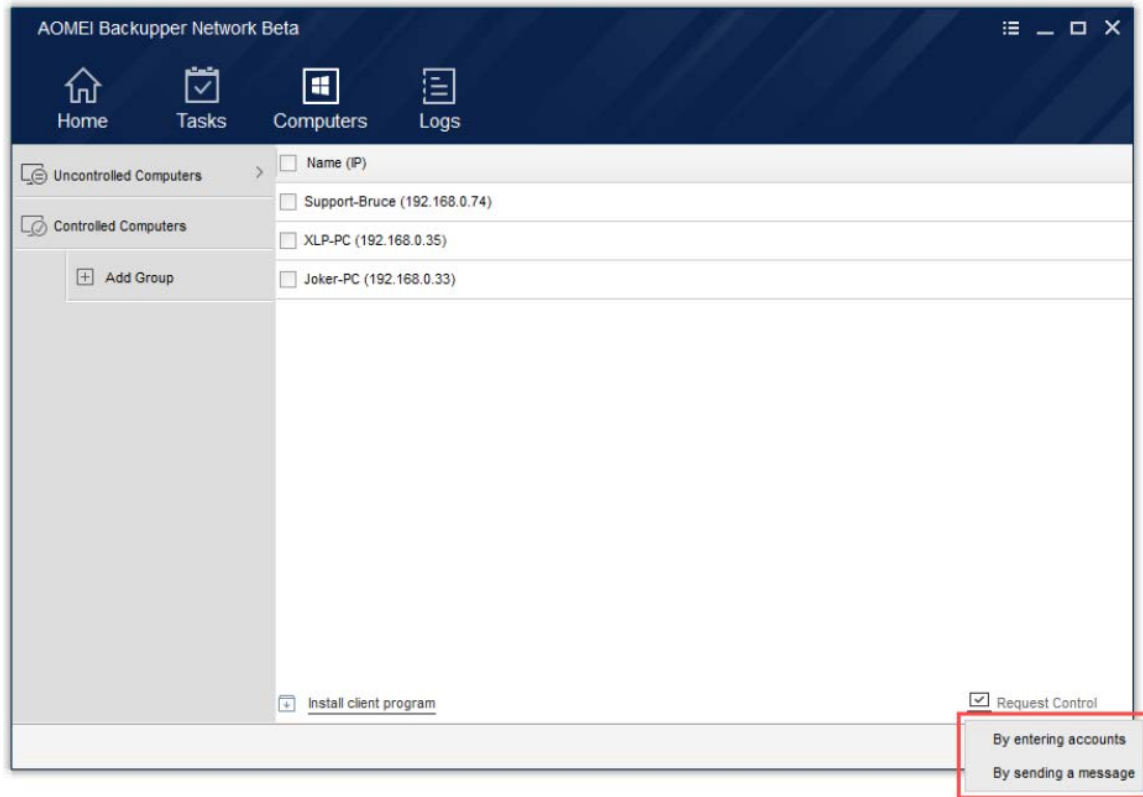
Step 1: Product Installation

- Install AOMEI Backupper Network Beta on Server side (you can select one PC, Workstation or Server as server side), you can download it from this [page](#).
- Install AOMEI Backupper Standard Beta on your client computers. Download the installation package from this [page](#), and then run it to install. When the popup window appears, click "**Next**" and follow the wizard installation guide. Once the installation process is completed, you can see the computers from AOMEI Backupper Network console under **Computers** Tab-> **Uncontrolled computers**.

Step 2: Obtain control permissions from clients.

After completing the installation, AOMEI Backupper Network console on the server side needs to obtain control permissions from client computers in order to create backups for these client computers.

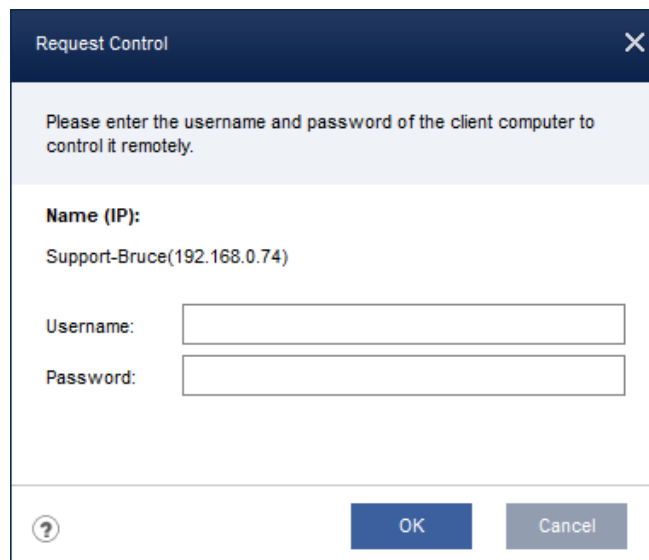
Go to **Computers** tab, click **Uncontrolled Computers**, it shows a list of computers that can be controlled.



1. Select computers you need to obtain the control permissions, then click **Request Control** to obtain permissions, there are two ways to do that:

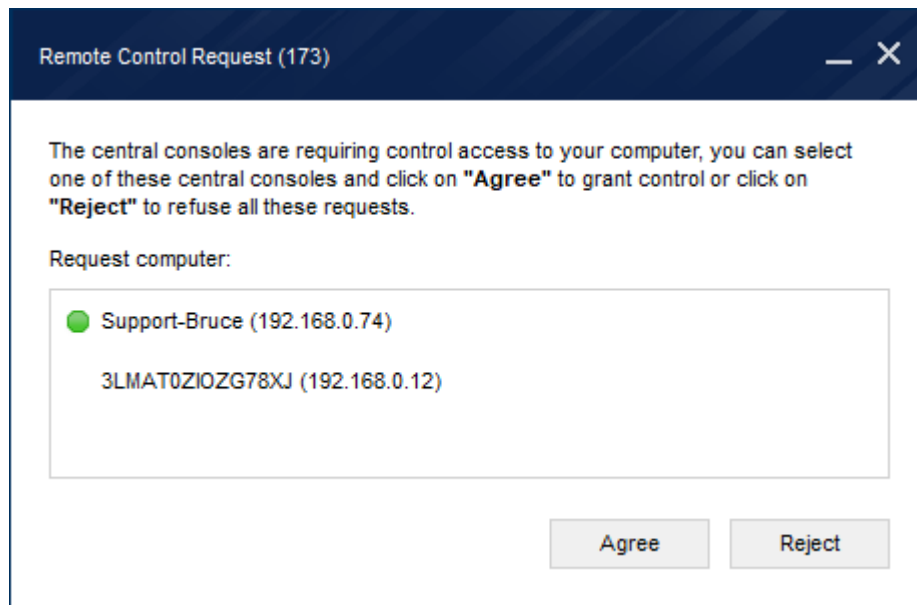
- **By entering accounts**

It allows you to enter client computers' login credential (administrator account is required).



- **By sending a message**

It will send a message to your client computers to obtain the permissions, which shows up with a window to **Agree** or **Reject** on client computers. Please click **Agree** on the client computers.

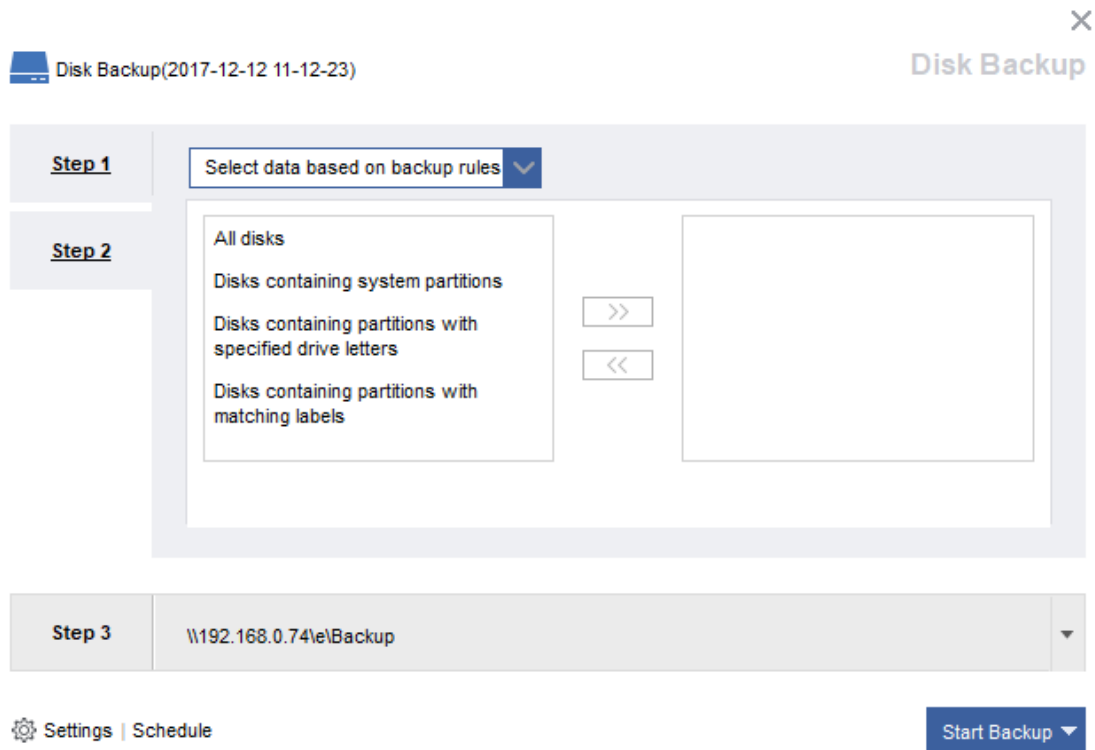


2. After control permissions are granted, you can see those added computers in **Controlled Computers** under **Computers** tab in AOMEI Backupper Network console.

Step 3: Create Backup Tasks


Now, you can create **Disk Backup**, **System Backup** and **Partition Backup** and centralize management of a batch of computers. Take **Disk Backup** as an example:

- Go to **Tasks** Tab, click **New Task**, and select **Disk Backup**.
- Select “Add Computers” in **Step 1** to add these client computers you want to back up.
- Hit “Select the source data you need to backup” in **Step 2**, there are several alternative backup rules: backup all disks, disks contain system partitions only etc.



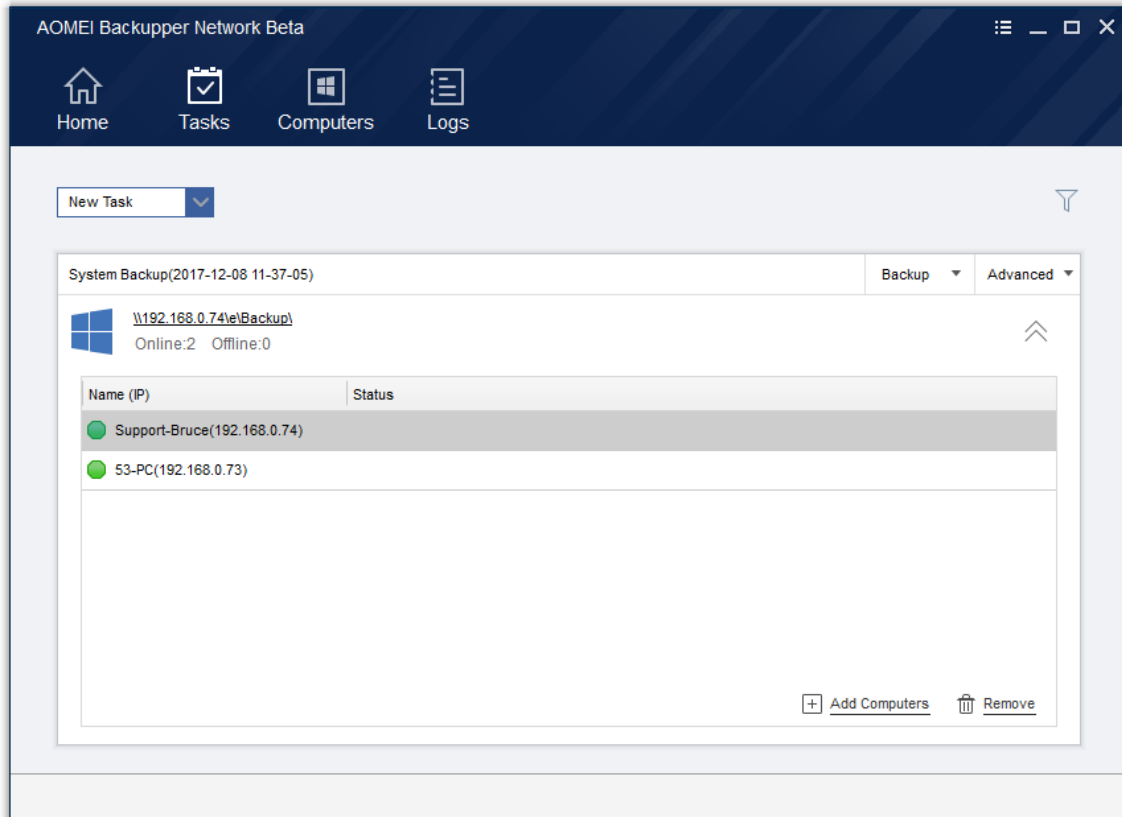
- Click “Select the destination location to save the backup” in **Step 3**: right click **Share or NAS device** or select **Add Storage** button to add storage path.
- Click **Start Backup** to create the task or execute the task.

Step 4: Manage Backup Tasks

After creating backup tasks, they will be listed under **Tasks** Tab, you can view the status of these tasks. Also you can the details of the single task by clicking  button. There are several available features for a single task management: **Backup**, **Advanced**, and **Add/Remove Computers**.

- **Backup**: You can run the task with Full, Incremental or Differential strategies.
- **Advanced**:
 - **Edit Backup**: You can schedule your task with daily, weekly, etc.
 - **Delete Backup**: You can delete the task only or task with the backup image created.
- **Add/Remove Computers** – You can select **Add Computers** to add those controlled client computers with same backup goal (e.g. all need to back up C:\ partition) based on this

task or Click **Remove** to remove those computers that no longer need to back up with this task. Also, you can view the tasks or the events logs under **Logs** tab on the toolbar.



Summary

Following this Quick Start Guide, you have learned how to back up for a batch of computers within same LAN from server side. When you need to restore the backup images to the corresponding computers, please go to the client computers to start the process with AOMEI Backupper Standard Beta to restore manually, and we will provide **Restore** feature to AOMEI Backupper Network soon.

For most frequently asked questions about AOMEI Backupper Network Beta, please check FAQs document , which can be found in program installation folder or [website](#). If you have any additional questions or feedback, please contact [AOMEI Support Team](#) for assistance.